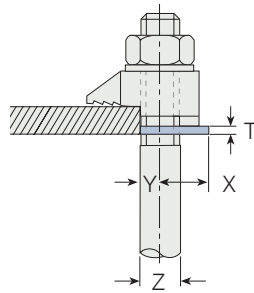




Type CW - Clipped Washer

Mild Steel, bright zinc plated / hot dip galvanised



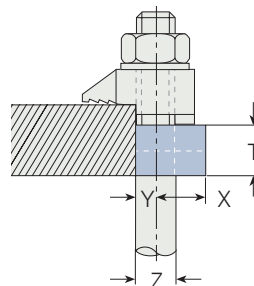
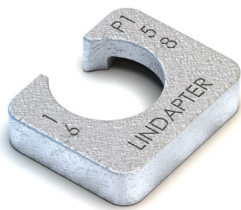
A packing used to adjust the tail length of the clamp to meet differing beam flange thicknesses.

Product Code	Bolt Z	Dimensions			
		Y mm	X mm	T mm	Width mm
CW08	M8	4	9.5	2	19
CW10	M10	5	14	2	25
CW12	M12	6	19.5	2.5	31
CW16	M16	8	17.5	3	38
CW20	M20	10	22	4	44
CW24	M24	12	29	4	57

Order example: CW08 BZP

Type P1 short / P2 short

Mild Steel, malleable iron, bright zinc plated / hot dip galvanised



A packing used to adjust the tail length of the clamp to meet differing beam flange thicknesses.

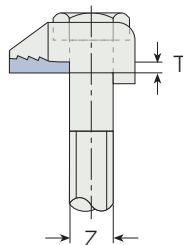
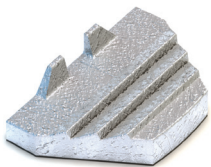


Product Code (P1) (P2)	Bolt Z	Dimensions				Width mm
		Y mm	X mm	T (P1) mm	T (P2) mm	
P1S08 P2S08	M8	4	10	4	8	21
P1S10 P2S10	M10	5	13	5	10	24
P1S12 P2S12	M12	6	16	6	12	30
P1S16 P2S16	M16	8	21	8	16	35
P1S20 P2S20	M20	10	23	10	20	43
P1S24 P2S24	M24	12	32	12	24	54

Order example: P1S16 HDG

Type T

Malleable iron, bright zinc plated / hot dip galvanised



A packing, for parallel flanges only, used to fill the nose of Type A and B, making it horizontal. The thickness 'T' should be added for tail length and bolt length calculations. The product is for aesthetic purposes only and is not mandatory from a technical perspective.

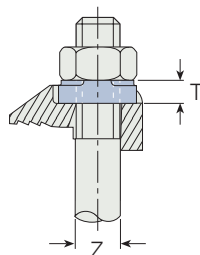
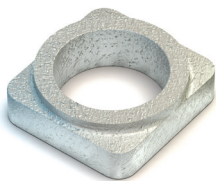


Product Code	Bolt Z	Dimensions
		T mm
T12	M12	3
T16	M16	4
T20	M20	5
T24	M24	6.5

Order example: T12 BZP

Type W

Mild Steel, malleable iron, bright zinc plated / hot dip galvanised



A washer used to fill the recess of Type A to enable the nut to be tightened. When calculating the bolt length, please add 'T'.

Product Code	Bolt Z	Dimensions
		T mm
W08	M8	4
W10	M10	5.5
W12	M12	6.5
W16	M16	8
W20	M20	9.5

Order example: W08 BZP