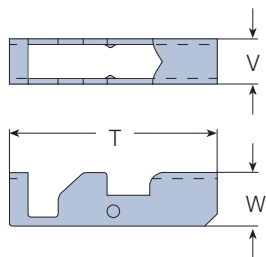
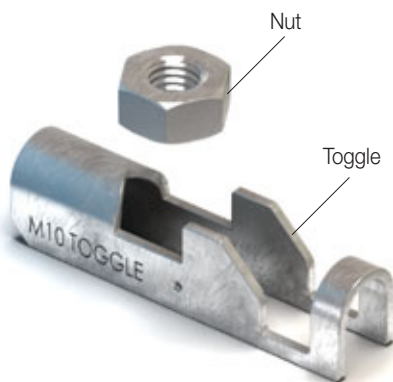


Type TC - Toggle Clamp

Steel Strip, bright zinc plated

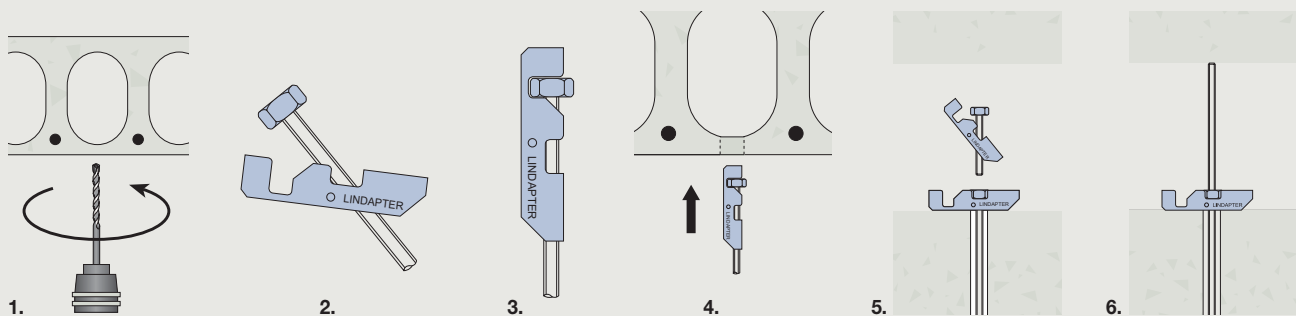


The Toggle Clamp is designed for service suspension from pre-cast hollow core slabs (minimum depth of core 75mm) as well as SHS, steel sheeting or purlins.

Product Code	Rod min. 8.8	Hole Ø mm	Safe Working Load ¹⁾	Tightening Torque Nm	Dimensions		
			(4:1 Factor of Safety) Tensile / 1 Rod kN		T mm	W mm	Width V mm
TC08	M8	22	2.45	10	68	16.5	13
TC10	M10	25	2.45	10	68	17.5	15

1) Subject to the strength of the concrete section.

Order example: TC08

Installation

1. Drill hole. If toggle is to be used to support from pre-cast hollow core slab, ensure hole is central to hollow core.
2. Insert threaded rod through toggle, ensuring nut is flush with end of rod.
3. Align toggle parallel with rod, so that nut engages into the retaining cavity.
4. Offer up the assembly, inserting the toggle body completely through the hole.
5. Shake rod so that toggle body locates horizontally across hole.
Allow rod to drop down so that the nut locates in the seat in the toggle body.
6. Wind up rod to top of section as shown as high as possible. Secure the assembly with a nut and washer.