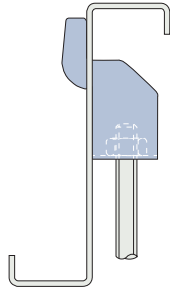


**Type WF**

Mild Steel, bright zinc plated

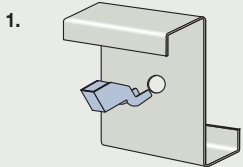


The Webfix – WF for a quick installation directly from the web of Zed purlins.

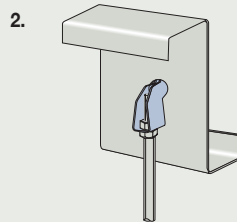
Product Code	Rod	Safe Working Load (5:1 Factor of Safety)		Hole Ø mm	Max. Distance X at Angle of		
		Tensile kN	Max. Purlin Thickness mm		10° mm	20° mm	30° mm
WF10	M10	1.0	4	18	103	94	74

■ Order example: WF10

**Installation**

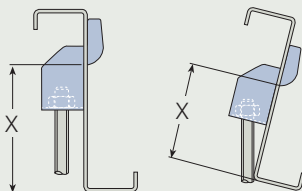


1. Squeeze legs of WF together and push through hole until it snaps into place.

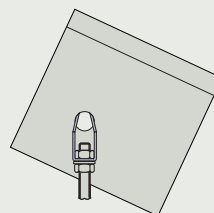


2. Assemble with nut and ensure full thread capture.

**Hole position for angled purlins**



Canted Purlins: As the angle of backwards cant increases, the maximum allowable distance X (hole centre to bottom edge of purlin) must decrease.



Inclined Purlin: The WF adjusts to whatever angle is required. Hole position is not a limiting factor on product installation.