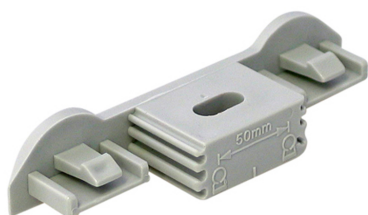


BIS starQuick® Duo Wallplates

accessories BIS starQuick® Pipe Clamps without Nut

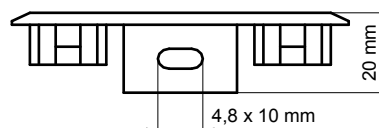
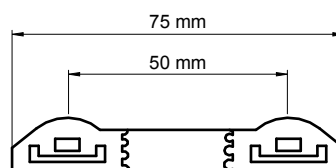


Features and benefits

- for fixing of two pipes with BIS starQuick® Clamps
- suitable for BIS starQuick® Clamps up to SQ-20
- the distance between the pipe and the wall is equal to that of a single clip
- material: modified PA6 (polyamide), grey or white
- resistant to UV, ageing, oil and petrol
- no corrosion, recyclable, halogen free
- temperature resistance: from approx. -40 °C to approx. +90 °C (constant); short to approx. +130 °C

Part No.	Model	Fa,z (N)	Colour	Pack 1	Pack 2
085 4 000	-	600	Grey (RAL 7035)	100	1.200
085 5 000	-	600	White (RAL 9003)	100	1.200
085 4 300	With hammer-in screw	600	Grey (RAL 7035)	50	600

Hammer-in screw: suitable for fixing into concrete, aerated concrete, brick.



Alternative

BIS starQuick® Rail

Complementary

BIS starQuick® Hammer-in Screw