



Jack Pennington Ltd

Mechanical - Electrical - Fixings - Offsite

Technical Supplier Catalogue



We take pride in being among the UK's leading independent M&E distributors. As a family-run business, we deeply value the enduring principles of integrity, trust, and professionalism.

Jack Pennington Ltd stands as a premier partner for building services products. We maintain close ties with our customers and suppliers, always pushing for ongoing enhancement. Regardless of whether it's the service we provide or the quality of products we deliver, we prioritize excellence above all.

The suppliers highlighted in this technical guide exemplify the high standard we consistently aim to provide to our esteemed customers. We consider our product traceability as a testament to our unwavering commitment.



Find us [here](#)

Our Offering



OVER 25,000 PRODUCT LINES STOCKED

With 25,000+ products, we cover both unique and essential items. Count on us for range and dependability



NATIONWIDE NEXT-DAY DELIVERY

Enjoy our nationwide next-day delivery. Wherever you are, we guarantee your order arrives the next day. Trust our fast and dependable service.



DEDICATED SALES CONTACT

Get direct support with our dedicated sales contact. Every customer has their own representative for clear communication and help



INDUSTRY RECOGNISED SUPPLY CHAIN

Trust in our supply chain, acknowledged and respected throughout the industry. Our commitment to excellence ensures you receive quality products, consistently and on time.



TRUSTED CARRIER PARTNERS

Rely on our trusted carrier partners. We collaborate with industry-leading carriers to guarantee timely and safe delivery of your orders, every time.



OFF-SITE MANUFACTURING DEPARTMENT

Tap into the expertise of our off-site manufacturing center. Purposefully situated for peak efficiency, it promises top-tier craftsmanship and timely order completion.



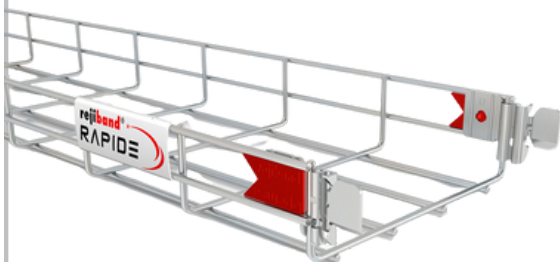
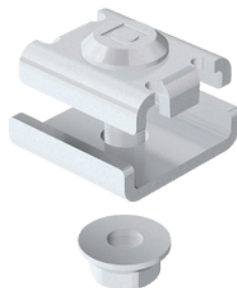
Cable Management Solutions

Pemsa UK was established in Leeds in 2003 and is a wholly-owned subsidiary of Pemsa Spain.

Pemsa is a family-owned company and has been manufacturing cable management products since 1969 to ISO 9001 standards, supplying materials all around the world.

All materials are certified according to IEC 61537 and comply with the relevant standards, with full traceability within the company from the purchasing of the raw materials right through to the sale of the finished articles.

For increased quality assurance, Pemsa also has its own on-site Electrozinc and Hot Dip Galvanising plants. Pemsa are also proud to be approved for use by London Underground.



Jack Boddye
Business Development Manager, Pemsa.

07376 412592

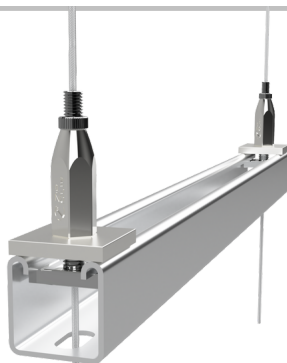
jack.boddye@pemsa.co.uk



Established in the UK in 2004, Zip-Clip is a designer and manufacturer of high-specification wire rope systems for the suspension and bracing of building services. Zip-Clip systems are recognized for their fully accountable performance, functionality, flexibility, ease of installation, and today, more importantly than ever before, their environmental credentials.

Zip-Clip wire rope suspension solutions support net-zero carbon programs by drastically reducing the impact of a project on the environment, with wire rope offering a 92% reduction in CO2 based on the weight of the product alone when compared to threaded rod.

Combine environmental advantages with full material traceability and accountability, BSI ISO 9001 quality management accreditation backed up by third-party verification, and you have a suspension or bracing solution that can be relied upon to deliver and trusted to meet the requirements of almost any project. With the comprehensive Zip-Clip range of products available for safe working loads (SWL) from 15 kg up to 500 kg per wire support, not to mention the additional designed-in safety factors, almost all installation preferences and requirements can be accommodated.



FM 765116



FM 765116

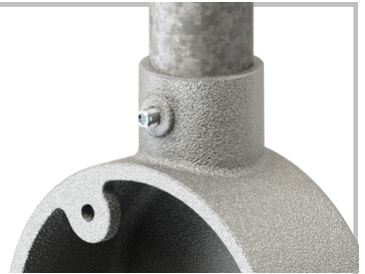


Alec Webster

Technical Sales Manager, Zip-Clip Ltd.

07880 197374

a.webster@zip-clip.com



Our Brands



Quality products

Our Metpro brand supplies high quality products exclusively to Electrical Wholesalers.

With our reputation for high quality products, in-depth stockholding and exceptional customer service, we work to ensure the industry receives only the best products at a competitive price.

All Metpro product receives multiple quality control checks, both at the point of manufacture and upon arrival into the UK, with each product batch tested in-house to an AQL of 1.5% in line with BS6001-1:1999.



Innovations

Demon Cato is our innovations and manufacturing brand; supplying unique, labour-saving products to the UK construction industry (through our Electrical Wholesaler Demon Cato Partners), and bespoke products to our Original Equipment Manufacturer customers.

Working with OEM businesses means Demon Cato operates in a wide variety of industries and sectors with much higher tolerance requirements than those of construction. Utilising our in-house engineering specialists and quality control department, we apply the same rigorous tests and controls here across all Metpro Group products, including our standard ranges.

Our customers will never be our final quality control check.



Our Accreditations*



*where applicable

Carbon Neutral

Metpro Group are committed to offsetting our carbon footprint with all domestic emissions for 2019, 2020, and 2021 having been offset, and 2022 now being addressed.

Our current target is to offset all Metpro Group emissions by mid-2025 and achieving complete carbon neutrality.



Mike Holmes

Product & Vendor Development Manager

07792 105809

mike.holmes@metpro.co.uk

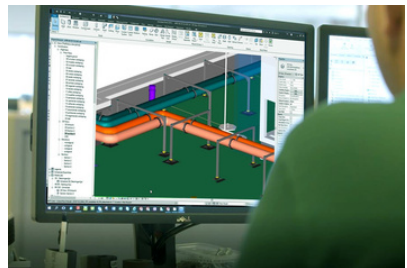
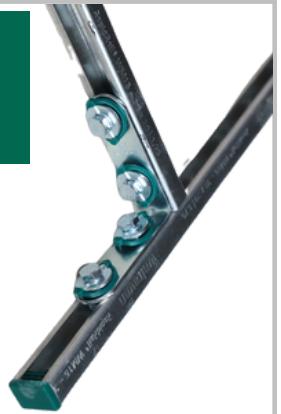
walraven

Walraven Ltd is part of Walraven Group with manufacturing and sales operations worldwide. We produce fixing solutions for the mechanical and electrical industry, as well as passive fire protection products.

We know how important it is for even the smallest part to do its job properly and make your work easy, safe, effective and sustainable. That's why we offer high quality, innovative, tested and approved products so you can be confident that our solutions will deliver.

Technical advice and project support

Alongside the product portfolio, Walraven offers a project support and a technical advice service. Our project support service is available to anyone who wants help designing optimal fixing solutions for their project. Whether it's pipe supports, rooftop plant, or fire stopping, our team can provide advice, designs, calculations, BIM models and more – to make your job easier!



Rob Lee

Business Development Manager, Walraven.

07500 936603

rob.lee@walraven.com

METALMATE®

FASTENERS FOR METAL

Offering quality-assured threaded fasteners, the METALMATE® range comprises over 5,500 fastener products available in 5 materials, 6 surface finishes, and sizes ranging from M3 to M48 in diameter, with material classes of 4.6, 4.8, 8.8, 10.9, and 12.9.

Manufactured and tested to international standards, METALMATE® products are produced by certified and audited factories operating under ISO 9001:2015. Our supply partners undergo regular audits to ensure product compliance, service quality, and timely order fulfillment.

METALMATE® fasteners are traceable to their source of supply and the batch of wire from which they were formed.

An EN 10204:3.1 certificate is available upon request, providing buyers with assurance that the purchased fasteners meet the requirements of the appropriate international standard.

The METALMATE® range includes CE/UKCA marked fasteners, signifying that the product has undergone assessment before being sold in the European or UK market and has been certified to meet the safety and health requirements of these regions.

Trivalent chromium passivation is applied after zinc plating to enhance the corrosion resistance of the fasteners. We use Cr3 as it is safer to handle and fully recyclable.

METALMATE® has been RoHS compliant since 2006, aligning with the requirements of the electrical and automotive industries.



Tom Metcalfe

Fixings Product Manager, Harrison & Clough

07857 473938

tom.metcalfe@harclo.com



SECURING CABLES WORLDWIDE

As a market-leading specialist designer and manufacturer of cable glands, cable cleats and accessories, CMP has been providing safe and innovative solutions to the global market for over 60 years; gaining an international reputation for quality and reliability.

Cable Glands

Designed to EN 62444, IEC 62444 and BS 6121, CMP's cable gland solutions are available to suit steel & aluminium wire armoured, unarmoured & braided cables.

CMP offers a wide range of cable glands for general industrial environments and explosive atmosphere applications. Explosive atmosphere cable glands are globally marked with global certification including ATEX, UKEX, IECEx, UL and cCSAus.

Cable Cleats

Cable cleats are designed, constructed, tested and third party certified in accordance with IEC 61914 standard 'cable cleats for electrical installations'. Available for single, trefoil and quad formation cables, products can be supplied in metallic and polymeric materials.



Technical Expertise to Support Your Needs

CMP's team of technical experts can provide support to your projects at no additional cost through a range of engineering services including:

- 3D CAD Models & 2D installation drawings
- Finite Element Analysis (FEA)
- Short circuit force & cleat spacing calculations
- Design & manufacture of bespoke product solutions
- Project specific testing
- Global installation training



Sam Atherton

Business Development Manager

07800 916412

sam.atherton@cmp-products.com



The Fischer Group of Companies is a family owned enterprise, founded by Artur Fischer in 1948. Today the group has 50 subsidiaries in 38 countries around the world. The group's outstanding powers of innovation have not only resulted in the development of many new products but multiple ETA's and over 1,500 patents.

We offer you a wide range of products covering fastening solutions from the fields of chemical resins, steel and plastics. We cover a very broad application spectrum with our standard products as well as project-based solutions and customer specific special developments. All of these are based on our know-how and experience gleaned during more than 75 years in anchoring technology.

80% of our products are made in-house. Our quality management system is certified in accordance with DIN EN ISO 9001. Through the Fischer Process System (FPS), we continuously optimise our processes and adapt flexibly to customer requirements.



We don't compromise on the safety of our products. We take part in the leading international, standard-setting councils in the fastening technology sector, thus contributing our knowledge to their work. Many of our products are characterised by thorough, up-to-date, international approvals, technical certifications and expert reports. The Managing Director of fischer UK is also the Chairman of the CFA.

We actively take the aspect of environmental protection and sustainable construction into account. Our environment management system has been certified in line with DIN EN ISO 14001. A large number of products have an Environmental Product Declaration (EPD) from the Institute of Building and Environment (IBU) and thereby a data basis for ecological building rating.

Our Technical Support Service provides cost-effective, legally compliant advice for all questions relating to fastening systems. Services that you can access include test installations, pull-out tests, individual designs, comparative calculations, and the development of special solutions.



Certifications:



Chris Bevin
Regional Account Manager

07342 034689

chris.bevin@fischer.co.uk

**A unique tool which fits
standard 1/2" drive ratchet handles**

Available in:

CSM10 17mm a/f - 41 x 41mm (Channel / Strut)

CSM12 19mm a/f (3/4") - 41 x 41mm (Channel / Strut)

CSM10s 17mm a/f - 41 x 21mm (Channel / Strut)

CSM10e 17mm a/f - 83/62 x 41mm (Channel / Strut)

CSM12e 19mm a/f (3/4") - 83/62 x 41mm (Channel / Strut)

**Save up to a third on material
costs & half on labour**

It enables you to fix slotted channel direct to walls,
floors & soffits/ceilings without the use of brackets.
Lack of brackets allow unlimited access to the channel.

Reduce fixing time

It also improves safety compared with tools that
are not specifically designed for the task.

Improve the quality of fixing

Because it fits 1/2" drive ratchet handles it allows
a quick and accurate torque set ensuring high
quality workmanship.



Max Recommended torque 30Nm to 95Nm. IMPACT RATED

Offsite Service Centre

 Cut Channel / Threaded Rod / Conduit

 Time Saving Elements

 No Hot Works Permit Needed On Site

 Modules

 Rooftop Supports

 Trapeze Brackets

 Bespoke Solutions

We're happy to help!



sales@pennington.co.uk

01274 534444